

## N. J. HOLMBERG

Nathaniel John Holmberg was born July 24, 1878 on a farm near Renville, Minnesota, the son of John M. and Mary (Wallin) Holmberg, early pioneers of Renville County. His childhood and youth were spent on the farm with his parents. He attended rural school and the public schools of Renville and graduated in 1902 from the University of Minnesota School of Agriculture. He returned to the family farm and was married at Sacred Heart, Minnesota on June 3, 1908 to Hilda M. Peterson, daughter of neighbors. Two children were born, a daughter Edith, now Mrs. John Parsons, and a son who died in infancy.

Mr. Holmberg was interested in local civic affairs which led to his public career. In 1906 he was elected to the state legislature and served in the House of Representatives in 1907, 1909, 1911 and 1913. In 1914 he was elected to the state Senate and served during the 1915 and 1917 sessions. He was responsible for a number of important bills. His first was for the establishment of the Fruit Breeding Farm at Zumbro Heights and that farm is a continuing monument to his memory. He eagerly sponsored aids for rural education.

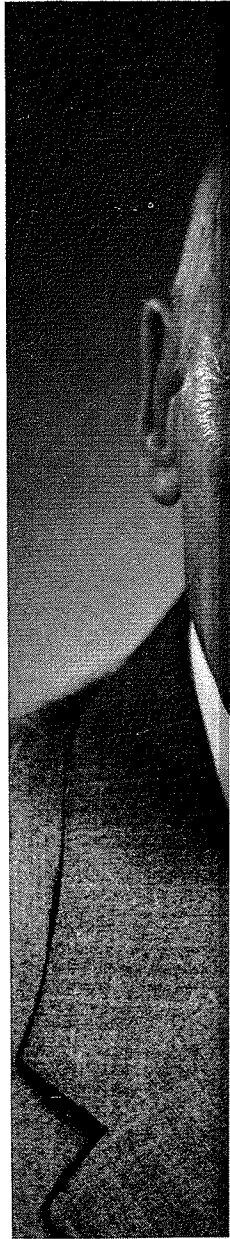
In 1918 Governor Burnquist appointed him to the State Board of Grain Appeals, and six months later he was appointed Commissioner of the newly created Department of Agriculture where he served ably for twelve years. During this time the new division of Dairy and Food was added and the department became known as the Department of Agriculture, Dairy and Food.

"N. J." as Mr. Holmberg was commonly known, called the first meeting for the organization of now known as the Land O'Lakes Creameries, and presided over its deliberations. About this same time the Central Cooperative for marketing livestock was inaugurated at South St. Paul. In 1931 he was elected chairman of the Board of Directors of the Modern Life Insurance Company, now known as the North Central Life Insurance Company.

Mr. Holmberg was elected to the Minnesota Railroad and Warehouse Commission in 1940 and re-elected in 1946. He was an active member of the National Association of Railroad and Utilities Commissioners where he was held in high regard and he served on the Committee of Service and Facilities of Transportation Agencies; the Committee on Legislation; the Panel of Cooperating State Commissioners; and he worked for the adoption of uniform regulatory laws and cooperative action by the Midwest States.

He was a Master Mason and a member of the Masonic Veteran Association of Minnesota; member of the National Association of Commissioners of Agriculture, serving as President for one year. He was a director of the American-Swedish Institute of Arts, Literature and Science; Life member of the Minnesota State Horticultural Society; Renville County Historical Society; Ramsey County Garden Club and a director of St. Anthony Park Bank and member of Grace Lutheran University Church in Minneapolis.

Mr. Holmberg was a painstaking and honest public official. He was endowed with a pleasing personality and high ideals and his influence was felt in many fields of endeavor. He had a kindly and sincere disposition and it can truly be said of him 'He was a friend of man.' He died June 13, 1951 in the City Council Chambers in the City of St. Paul, after having delivered an eloquent speech regarding the city parks and the merits and ethics of preserving them for the purposes for which they were dedicated by their donors.



8 on a farm  
ary (Wallin)  
childhood and  
attended rural  
in 1902 from  
e returned to  
esota on June  
Two children  
and a son who

which led to  
egislature and  
1911 and 1913.  
uring the 1915  
of important  
Breeding Farm  
nument to his  
on.

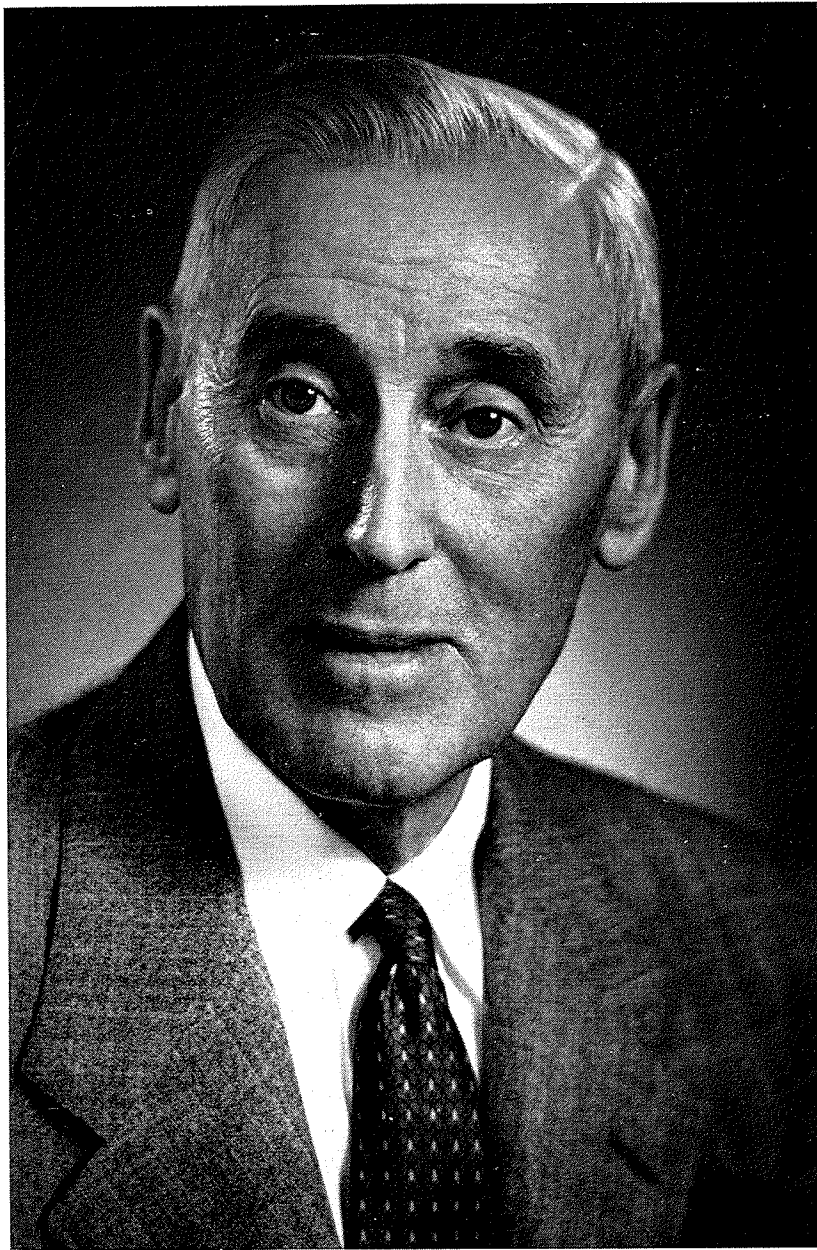
the State Board  
ointed Commis-  
ture where he  
new division of  
e known as the

called the first  
Land O'Lakes  
this same time  
inaugurated at  
f the Board of  
w known as the

road and Ware-  
e was an active  
d Utilities Com-  
e served on the  
n Agencies; the  
y State Commis-  
regulatory laws

Masonic Veteran  
l Association of  
t for one year.  
e of Arts, Litera-  
ate Horticultural  
y County Garden  
member of Grace

public official. He  
h ideals and his  
ad a kindly and  
e was a friend of  
mbers in the City  
ch regarding the  
ng them for the  
nors.



N. J. HOLMBERG

1878-1951

LEGISLATIVE MANUAL  
Compiled for the  
MINNESOTA LEGISLATURE  
1953

THIS MANUAL IS  
RESPECTFULLY DEDICATED  
TO THE  
SENATORS AND REPRESENTATIVES  
OF THE  
FIFTY-EIGHTH LEGISLATIVE SESSION  
OF MINNESOTA  
AND TO THE  
PEOPLE OF THE NORTH STAR STATE

MRS. MIKE HOLM  
SECRETARY OF STATE