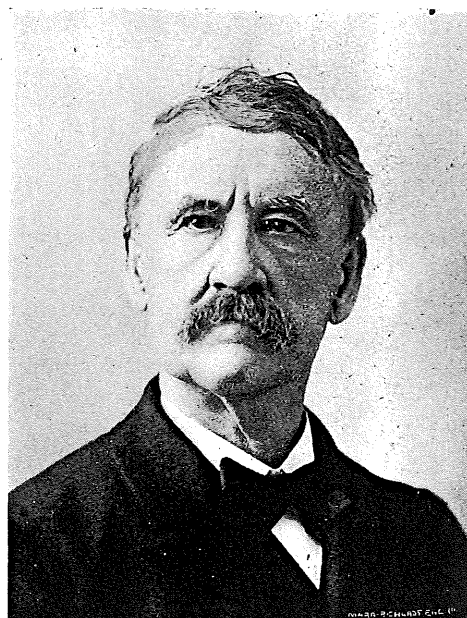


at the session of 1885, and aided in drafting the law which created the railroad and warehouse commission and which has formed the basis of all legislation of that kind since. Mr. Steenerson is a member of the Norwegian Lutheran Synod church, and was married in 1878 to Miss Mary Christofferson. They have two children living, Clara N. and Benjamin G.

LOUIS A. EVANS.

Louis A. Evans, of St. Cloud, is a native of Pennsylvania. He was born at Philadelphia, November 22, 1822, a son of Levi Evans and Elizabeth Wills (Evans). He attended the public schools of Philadelphia, but was not favored with the advantages of a college education. While yet a young man he left his native state and went South, where he resided until the fall of 1856, when he was attracted by the allurements of frontier life. In the fall of that year he began the long and tedious journey with ox teams which ended at what is now St. Cloud, December 15, the same year. Here Mr. Evans has resided ever since. He has been repeatedly elected to offices of various degrees of importance and responsibility, administrative, legislative and judicial, and it is conceded that he has filled them all with credit to himself and to the satisfaction of the public. When the city of St. Cloud was incorporated in 1862 he was chosen as its first mayor, since which time he has held the same office four times, which of itself is an indication of the high esteem in which he is held by his fellow citizens. After coming to Minnesota, Mr. Evans pursued the study of law and was admitted to the bar in October, 1866. In 1860 and 1861 he served as the representative of his district in the house of representatives, and in 1867 was promoted to the upper house in the state legislature. In 1862 Mr. Evans was elected city justice, which office he subsequently resigned to accept that of judge of probate. After the expiration of his term as probate judge he was again elected city justice, only again to resign to accept the office of judge of probate, to which he had been elected and which he held without a break for nearly twenty years, as he did that of city justice nearly as long after being re-elected to that office. In politics Judge Evans is an old-line Democrat, and has always been



regarded as one of the reliable adherents of that political faith, even when his party was so decidedly in the minority in this state that it cut but little figure in public affairs. As a leader among men, however, he was often honored by Minnesota Democrats with the position of delegate to party conventions, and represented the state in the national convention at Cincinnati in 1880, which nominated General Hancock for president. During all this period of his public life in St. Cloud, the duties of which have demanded most of his attention, he has conducted privately the business of real estate and insurance, in which lines of activity he exercised the same energy and displayed the same qualities of uprightness and reliability which characterized his public acts. He has for many years been one of the directors of the First National Bank, and has been identified in many ways with enterprises for the promotion of the interests of St. Cloud. In early manhood he became a member of the Independent Order of Odd Fellows, and helped to organize the first lodge of that order in St. Cloud. Although now in his seventy-fourth year, Judge Evans is an active and vigorous man, in the full enjoyment of all his faculties, and actively engaged in the conduct of his professional and business interests. He was married in June, 1871, to Elizabeth W. Libby. They have no children.

Marion Daniel Shutter, Progressive Men of Minnesota, 1897