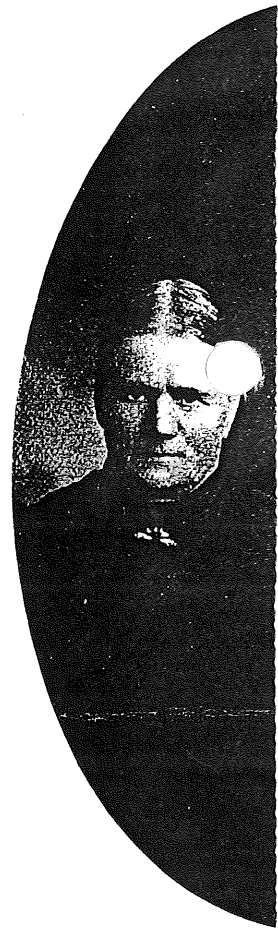


Cecelia, daughter of Olaus O. and Margit Sanness, of Wilmington township. He and his wife have had seven children: Odin Centennial, born Jan. 3, 1904; Minerva Viola and Myrtle Sadella, twins, born May 19, 1906; Edwin Carlton, born Sept. 13, 1908; James Norton, born May 5, 1912, who died in infancy; and Ervin Palmer, born Aug. 13, 1914.

Carl and Edwin Burtness, who under the firm name of Burtness Bros., are engaged in scientific stock farming in section 14, Wilmington township, are the sons of Elling and Kristi Burtness, and were born in this township, Carl on April 30, 1882, and Edwin on Jan. 20, 1888. In early youth both brothers attended school in district 85, and Carl was subsequently a pupil at Brickenridge Academy at Decorah, Iowa, where he studied for two years, in 1903 and 1904 attending the Minnesota Agricultural School. Edwin, after graduating from the common school, attended Gale College at Galesville, Wis., and afterwards spent three years in the Minnesota Agricultural College, being graduated in 1911. The farm which they are now operating is the old home farm of their parents, on which both have resided since their birth, except that Carl spent one year on a wild homestead in Minnesota. The farm was rented by them in 1910. It contained 120 acres, lying in sections 14 and 15, Wilmington township. In 1917 they bought 120 acres adjoining, in Wilmington township, giving them a total area of 240 acres, of which 200 acres are now under the plow. Though they raise abundant crops, all their grain is turned back onto the farm in the shape of feed for the stock, the raising of which is their main line of business. They have between 90 and 100 head of cattle, about 25 of which are pure-blooded Guernseys, their specialty being the raising of pure-blooded cattle and hogs. Their only sales are of cattle, hogs and cream, and they buy feed rather than sell it. Among the buildings on the farm are a barn, 30 by 80 by 16 feet, with an eight-foot basement of stone; a feed room and dairy room, each 10 by 14, attached to the barn; a tile silo, 14 by 40, with a capacity of 125 tons; a corn crib, 14 by 30 by 11; a tile hog house, 20 by 40 by 8, with a cement floor, and also a cement feeding floor, 30 by 48; a machine shed, 20 by 40; feed room, 10 by 14; and a garage, 12 by 18. The house is a comfortable eight-room dwelling, with a separate summer kitchen. All the buildings are lighted by electricity, and the barn is fitted throughout with the most modern appliances, including a two-unit milking machine. The operating equipment, which is of the best, includes a fine auto, and the farm is well watered and beautifully situated. The brothers are unmarried, their two sisters keeping house for them. They are stockholders in the Wilmington Creamery Association, the People's Co-operative Stock & Grain Company, of Caledonia, and the Spring Grove Stock & Grain Company, and are numbered among the most prosperous farmers of Wilmington township, where they enjoy a wide popularity. Their religious affiliations are with the Norwegian Evangelical Lutheran church, of Wilmington.

Elling H. Burtness, an early settler in Houston county, who carried from the wilderness a good farm in sections 10 and 11, Wilmington township, was born at Nes Hallingdal, Norway, Sept. 29, 1837, son of Helge Pedersen Burtness. His mother, whose maiden name was Live Magermoen, died in



MR. AND MRS.

Burtmess, Carl

HISTORY OF 13472232

# HOUSTON COUNTY MINNESOTA

EDITED BY  
FRANKLYN CURTISS-WEDGE

RECEIVED

DEC 16 1976

MANKATO STATE UNIVERSITY  
MEMORIAL LIBRARY  
MANKATO, MINN.

ILLUSTRATED

1919

H. C. COOPER, JR. & CO.  
WINONA, MINN.

RECEIVED

OCT 16 1970

MANKATO STATE COLLEGE LIBRARY  
Mankato, Minnesota

