

Victor Schulz; formerly a state representative

7-15-87
ST

Victor Schulz, 76, of Zumbrota, Minn., a member of the Minnesota House of Representatives from 1971 to 1978, died of cancer Monday at Zumbrota Community Hospital.

Schulz, a DFLer and longtime dairy and crop farmer, was first elected to the House in 1970 from District 6B, then part of Goodhue County.

After redistricting he was reelected three times from District 25B, which then included parts of Goodhue and Wabasha counties.

"I think of him as a true citizen-politician," said Sue Rockne of Zumbrota, a Democratic national committeewoman. "He was a farmer from a simple background who used his native common sense at the Legislature."

Schulz believed in public service,

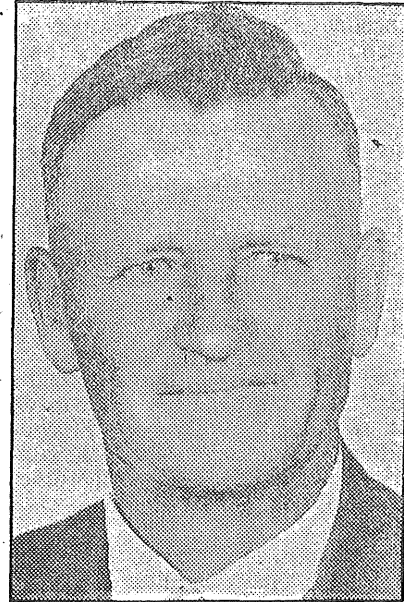
and was respected by politicians of both major parties.

In 1986 he was cochairman of U.S. Rep. Tim Penny's campaign in the First District.

Schulz was born in 1910 on a Belle Creek Township farm in Goodhue County. He attended the University of Minnesota's School of Agriculture and, later, was active in the Farmers Union and was a longtime member of the board of directors of the Goodhue County Cooperative Electric Association.

He had been a Sunday school teacher at St. John's Lutheran Church in Minneola Township and, for many years, the coach of a women's softball team.

Schulz is survived by his wife, Josie; a brother, Gerhard of Big Timber,



Victor Schulz

Mont., and a sister, Esther Dougan of Woodstock, Ill.

Visitation will be from 2 to 5 p.m. and 7 to 9 p.m. today and 8 a.m. to noon Thursday at the Larson Funeral Home in Zumbrota. Services will be held at 2 p.m. Thursday at Christ Lutheran Church in Zumbrota, with visitation at the church starting at 1 p.m.