

Obituaries

Richard W. Fitzsimons dies; was representative, senator

Former state legislator Richard W. Fitzsimons, 68, who served in both the Minnesota House and Senate, died of a heart attack Wednesday at Dakota Hospital in Fargo, N.D. He had lived in Moorhead, Minn., for the past 14 years.

Fitzsimons, an Independent-Republican, served in the Minnesota House for 20 years, including 10 years as chairman of the Appropriations Committee, and in the Senate for four years. He became an expert on governmental finance and one of the Legislature's most respected figures.

"He was testimony to the fact that it was possible for somebody to be nice and always be a gentleman, and yet be effective," said former Gov. Wen-

dell Anderson. "One of the reasons we were so successful in the early 1970s was Dick Fitzsimons."

Fitzsimons was born in Argyle, Minn., and attended public schools there. As a young man he farmed and was a 4-H club agent.

He was elected to the House in 1952. He served on the Appropriations Committee for 18 years.

In August 1969, Fitzsimons was badly burned in a tractor accident. He spent 15 months recuperating. When he finally was fit, it was time for the 1971 legislative session, which grew into a 10-month marathon.

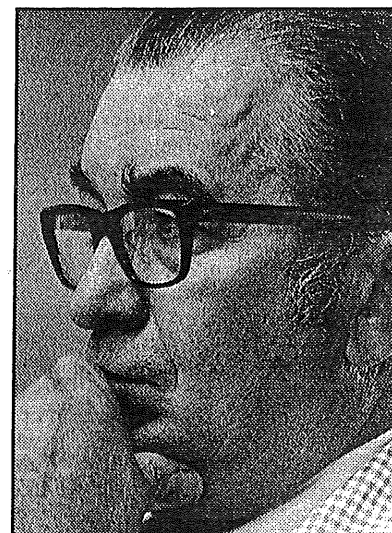
Fitzsimons moved his family to War-

ren, Minn., when he was elected to the Senate in 1972. He served one term and was named to the Senate Finance Committee.

He did not seek re-election in 1976m but became executive director of the Red River Valley Sugarbeet Growers Association in Fargo. Recently he had served on a blue-ribbon commission studying the Minnesota university system.

He is survived by his wife, Janice; a daughter, Lori, of Fargo; a son, Mark, of Olean, N.Y., and a sister, Lucille DuCharme, of Bartow, Fla.

Services will be held at 1:30 p.m. Saturday at St. Joseph's Catholic Church in Moorhead. Visitation will



Richard W. Fitzsimons

be held from 4 to 9 p.m. Friday at the Korsmo Funeral Chapel in Moorhead and one hour before the service at church.